

# Roxana Karam

Landscape Architect | PhD in Architecture

Roxana.karam@gmail.com

www.roxanakaram.com

07477778077

## Professional Summary

Accomplished designer, landscape architect, and researcher with over 6 years of combined experience in industry and academia. Recently awarded a PhD in Architecture from the University of Edinburgh, with research focused on tactical urbanism, urban gap-sites, and data-driven design. Proven expertise in leading complex design projects, delivering innovative and context-sensitive solutions across spatial scales. Strong technical proficiency in CAD/BIM environments, detailed documentation, and graphic communication. Experienced in interdisciplinary collaboration, university teaching, and mentoring.



## Education

Jul 2025- Ph.D in Architecture

Thesis title: Integrating Biosemiotics with Urban Tactical Navigation: A Framework for Novel Spatial Strategies  
University of Edinburgh. Edinburgh College of Art. School of Architecture and Landscape architecture

Sep 2011- August 2014 MSc in Architecture and Technology

Final Project: Diagrid structures in railway station complex design; Location: Iran-Khodro railway station complex | University of Science and Technology (IUST). School of Architecture and Landscape Architecture

Sep 2007- September 2011 BSc in Architecture

Final Project: International Museum of Architectural Spaces; Location: Tehran Valiasr street | University of Science and Technology (IUST). School of Architecture and Landscape Architecture

## Professional Experience

Pegasus Group

Apr 2025 - Current

Landscape Architect | BIM Coordinator | Designer

HarrisonStevens Landscape Architecture & Urban Design

Feb 2023 - Feb 2025

Landscape Architect | BIM Coordinator | Designer

- Developed strategic landscape frameworks and reports addressing public realm enhancement, traffic control, and anti-terrorism measures.
- Contributed to RIBA Stage 2–3 Design and Access Statements for key projects including The Ard, Bangour Hospital, and Pinetrees Hotel, with a focus on opportunities and constraints analysis, concept diagrams, and planning support.
- Produced detailed landscape proposals across a range of project scales, from masterplanning to technical delivery.
- Led the preparation of Stage 3–4 drawing packages (GA, hard/soft landscape, levels, and technical details) for projects such as The Ard, Edinburgh College of Art Redevelopment, Bangour Hospital, and Pinetrees Hotel.
- Participated in design team and client meetings for projects including The Ard, Pinetrees Hotel, and Falkirk Canal Art Park, ensuring effective coordination and delivery.
- Attended regular CPD sessions to maintain up-to-date knowledge of landscape materials, construction techniques, and industry standards.
- Represented the practice at marketing and networking events, contributing to business development and client engagement.
- Authored a Light-BIM Execution Plan tailored to the studio's workflow and project requirements.
- Developed and managed Revit workflows for landscape design, including the creation of technical drawing standards, templates, and 3D modeling outputs.

- Produced high-quality 2D and 3D models at various design stages, supporting both conceptual development and technical resolution.

Armadilla Ltd.

Feb 2019 - Dec 2022

Architectural Technologist and Designer

Product Design

- Led the design and development of Wave 30 and Wave 40 modular units, from early concept and sub-assembly detailing to technical drawings and client-manufacturer coordination.
- Designed bespoke interior architecture elements including built-in furniture, TV walls, moss feature walls, and acoustic wall panelling.
- Developed design strategies to optimise manufacturing efficiencies for key sub-assemblies and components.

CAD/CAM

- Produced detailed manufacturing files for 5-axis CNC machining, including tool selection, cutting strategies, and geometric calculations to ensure precision and seamless assembly.
- Supervised CAD/CAM documentation and implemented BIM Level 1 coordination across the design and production teams.

Digital marketing and operations

- Managed the design team's deliverables and scheduling for modular product lines (Wave 30 and Wave 40).
- Designed and launched the company's website and digital marketing strategy, including social media content and brand storytelling.
- Created commercial brochures and bespoke client presentations tailored to site-specific and customised projects.

The University of Edinburgh

Dec 2014 - Feb 2019

Co-Tutor | Project Supervisor | Digital Tutor

- Supervised and tutored interdisciplinary and architectural design courses at undergraduate and postgraduate levels, supporting student development through studio teaching and project guidance.
- Assessed student work and provided detailed, constructive feedback, integrating digital tools and workflows to enhance learning outcomes.

## Skills

- Proficient in AutoCAD, Revit, Vectorworks, SketchUp, Adobe Creative Suite (Photoshop, Illustrator, InDesign)
- Strong understanding of design principles and urban/landscape planning concepts
- Excellent communication, presentation, and interpersonal skills
- Detail-oriented with a focus on high-quality delivery
- Able to work effectively both independently and in team settings

## Awards & Grants

- Queen's Award for Enterprise, Armadilla Ltd. – 2020
- Devolved Researcher Fund, The University of Edinburgh – 2018 (for 2018/19)
- Devolved Researcher Fund, The University of Edinburgh – 2018 (for 2017/18)
- IAD Action Fund (Regular Grant), Institute for Academic Development, University of Edinburgh – 2017
- Festival of Creative Learning Grant, IAD, University of Edinburgh – 2017
- Postgraduate Research Expenses Grant, Edinburgh College of Art – 2017
- Postgraduate Research Expenses Grant, Edinburgh College of Art – 2016
- First-Class MSc Graduate, School of Architecture and Landscape Architecture, Iran University of Science and Technology – 2014
- Honourable Mention, First General Assembly of the Architecture & Urban Planning Science Association, Iran University of Science and Technology – 2010

# Roxana Karam

Landscape portfolio



# Content

## Projects

The Ard

Bangour Hospital

Pinetrees Hotel

Dalhousie Castle Hotel

Quirky Glamping Nights Village

Trenythor Manor

Glasgow Urban Soundwalk

Sound thought 2019



## The Ard

HarrisonStevens, in collaboration with  
Hawkins\Brown Architects  
Glasgow, UK

HarrisonStevens is delivering landscape design for The Ard, a high-density residential development in Glasgow, in collaboration with Hawkins\Brown Architects. The scheme features high-quality roof terraces and amenity spaces designed to maximise panoramic views and enhance the urban living experience. The landscape strategy focuses on activating external spaces through layered planting, integrated public realm elements, and multifunctional design interventions that contribute to the wider cityscape.

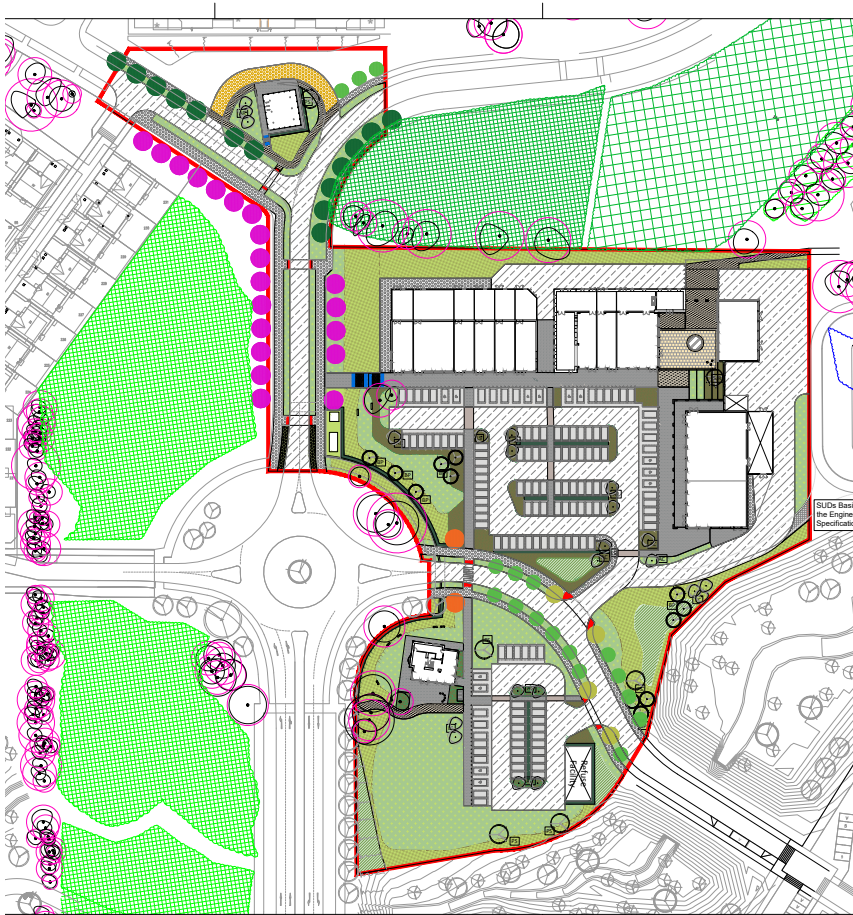
\* Assisted in the preparation of the planning submission package (Stage 3.00), including detailed landscape drawings, design reports, and supporting documents.

\* Contributed to schematic design development for roof terraces and amenity areas, enhancing the project's residential character and visual identity.









# Bangour Hospital (commercial

Hub)

HarrisonStevens

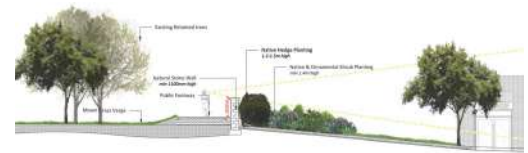
West Lothian, UK

HarrisonStevens is part of the multidisciplinary team delivering the masterplan and detailed design for the redevelopment of the former Bangour Hospital site. The scheme includes public parks, plazas, and a Landscape and Habitat Management Plan to guide long-term stewardship. The project incorporates public art strategies and ongoing stakeholder consultation to ensure a context-sensitive and community-focused approach.

\* Contributed to the preparation of Stage 2.00 concept design and landscape appraisal for the central plaza within the commercial hub.

\* Assisted in the development of the Stage 3.00 planning set, including detailed landscape drawings and supporting planning documentation.

\* Supported coordination of public realm proposals in line with heritage context and placemaking objectives.



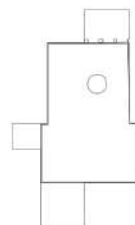


# Plaza Evolution and Form

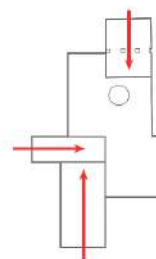
01 The Plaza outline



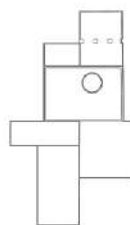
02 Framing the space



03 Access paths  
linking properties by  
penetrating into the core  
space



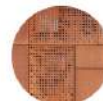
04 Internal zones  
Framing the core  
and its surrounding  
by defining 300mm borders.  
Framing the core  
spill-out as well as  
open points center for  
more defined gathering  
spaces using trees.



05 Celebrating  
local point  
introducing visual focal  
point by planting a tree  
on the intersection of  
the main access paths  
and the public art



06 Furniture  
and other site  
elements  
On the plaza  
corner buffer  
cycle zone, we are  
considering space of  
public art to celebrate  
the local house and  
adjacent plot where  
the railway station  
once stood which  
concerns the Plaza's  
atmosphere.



Corne perforated panels



tumbled concrete block



Reinbound gravel



Sandstone paving





# Pinetrees Hotel

HarrisonStevens

West Lothian, UK

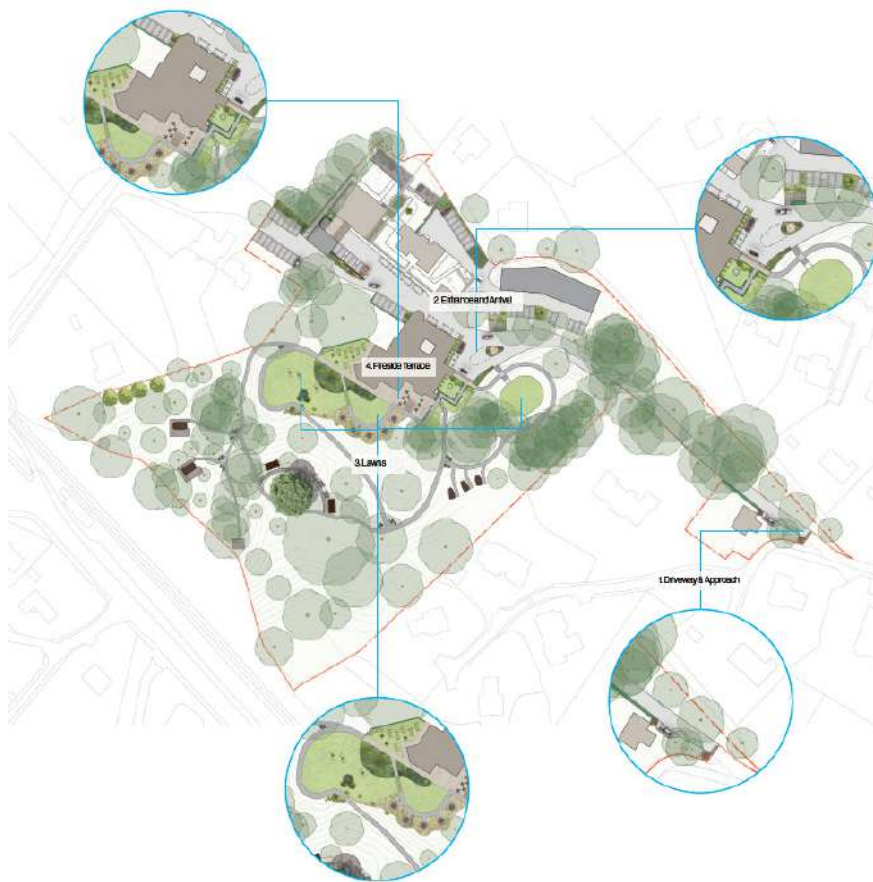
The Pinetrees Hotel, originally established in 1935 and set within a 19th-century Scottish country estate, occupies over 10 acres of gardens and woodlands. HarrisonStevens is collaborating with ISA and Apex Hotels to deliver a phased landscape redevelopment aimed at enhancing the guest experience through sensitive interventions and improved spatial legibility.

- \* Contributed to Stage 2.00 concept design and assisted in the preparation of the Stage 3.00 planning submission package for Phase 1, focusing on the main house and entrance sequence.

- \* Developed technical drawings for the tender submission, including hard and soft landscape detailing.

- \* Actively participated in Design Team Meetings to coordinate with architects, engineers, and hotel stakeholders.









# Dalhousie Castle

Armadilla Ltd.

Midlothian, Scotland

Commissioned by Robert Parker Collection Hotels Ltd, the proposal introduces 12 high-end tourist pods within the grounds of Dalhousie Castle to expand accommodation capacity while complementing the listed heritage setting. The pods are sensitively located around the perimeter of an existing field, with design considerations to preserve the woodland root protection zones and enhance the surrounding landscape. Planting fingers extend between pods to provide screening and a sense of seclusion.

- \* Assisted in the development of Stage 2.00 concept design, including site layout, access paths, and pod landscaping.
- \* Contributed to landscape design strategies that respect the castle's heritage and integrate with existing woodland.
- \* Coordinated with architects and consultants to support the planning application and ensure design cohesion.

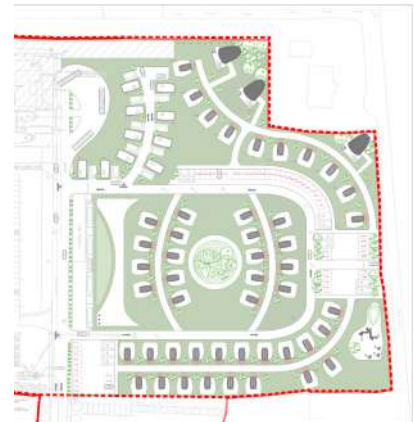


# Quirky Glamping Nights Village

Armadilla Ltd.  
Enniscrone, Ireland

Located in Enniscrone, this unique glamping site integrates transport-themed accommodation, including a decommissioned Russian Boeing 767 that has served as a landmark attraction since 2016. The development proposes 60 luxury pods, along with new access roads and carefully considered hard and soft landscaping to enhance the visitor experience and site coherence.

- \* Assisted in the preparation of site layout and concept design for the pod village and supporting infrastructure.
- \* Supported landscape strategy development, including materials, planting, and circulation design.
- \* Collaborated with the design team throughout the planning process to ensure cohesive and context-sensitive proposals.





# Trenyhton Manor

Armadilla Ltd.

Cornwall, England

Set within a historic 24-acre estate overlooking the sea, Trenyhton Manor is part of the IDILIQ Hotels & Resorts portfolio. The proposal introduces 24 luxury accommodation pods carefully integrated into a sloped landscape, forming a series of terraces that maximise panoramic coastal views while preserving the character of the historic estate.

- \* Assisted in designing the site layout for pod placement, responding to topography and view corridors.
- \* Contributed to Stage 2.00 concept development and selection of landscape materials.
- \* Supported coordination with the wider design team to align proposals with heritage and site context

