

Roxana Karam

Urban design . Landscape Design . Research

Roxana.karam@gmail.com

www.roxanakaram.com

07477778077

Professional Summary

Accomplished designer and technologist with 6 years of experience in industry and academic positions. Demonstrated expertise in project leadership, technical proficiency, and innovative design solutions across various spatial scales. Proven ability to combine creativity with meticulous attention to detail to deliver impactful design and urban planning projects. Skilled in technical drawing, design, documentation, and presentations. Experienced in tutoring and cross-disciplinary project supervision.



Education

Oct 2014- Ph.D in Architecture (Expected)

Thesis title: Find the Gap _ A Biosemiotic approach to Tactical Urbanism | University of Edinburgh. Edinburgh College of Art. School of Architecture and Landscape architecture

Sep 2011- August 2014 MSc in Architecture and Technology

Final Project: Diagrid structures in railway station complex design; Location: Iran-Khodro railway station complex | University of Science and Technology (IUST). School of Architecture and Landscape Architecture

Sep 2007- September 2011 BSc in Architecture

Final Project: International Museum of Architectural Spaces; Location: Tehran Valiasr street | University of Science and Technology (IUST). School of Architecture and Landscape Architecture

Professional Experience

HarrisonStevens Landscape Architecture & Urban Design

Feb 2023 - Present

Snr Architectural Technologist and Designer

- Developing landscape frameworks and reports addressing critical aspects such as traffic control, anti-terrorism measures, and enhancement of the public realm.
- Inputting into RIBA stage 2 and 3 design access statements for various projects such as The Ard, Bangour Hospital, Pinetrees Hotel, including the development of landscape opportunities and constraints and diagrams for planning purposes.
- Developing landscape proposals for multiple projects across different scales.
- Producing Stage 3 and 4 drawing packages for projects such as The Ard, Edinburgh College of Art redevelopment, Bangour Hospital, and Pinetrees Hotel, including general arrangements and technical details during concept, design, development, and technical stages.
- Attending design team and client meetings for Pinetrees Hotel, The Ard, and Falkirk Canal Art Park.
- Attending regular CPDs for developing and maintaining knowledge of landscape products, and techniques as well as, to stay updated on current market trends, supply, and landscape processes.
- Attending company marketing events to represent the company and strengthen existing and develop new relationships with clients and collaborators.
- Developing a Light-BIM execution plan and workflow for the business.
- Developing and managing Revit workflows for Landscape Design, including technical drawing standards and templates.
- Producing 2D and 3D models for various stages of landscape and urban design projects.

Product Design

- Designing details and interior of Wave 30 and Wave 40 products, from concept development, sub-assemblies, design statements, technical drawings, to client-manufacturing coordination.
- Designing furniture and interior architecture including TV-Wall, accent moss wall, and wall panelling
- Designing manufacturing efficiencies for sub-assemblies

CAD/CAM

- Developing manufacturing and CNC files for the 5-axis CNC machine, including tool selection, cutting angles, and mathematical calculations to ensure seamless assemblies.
- Supervising CAD/CAM documents and developing BIM Level 1 coordination between involved technicians and designers within the team.

Digital marketing and operations

- Managing design team and deliverables for the Wave products (Wave 30 and Wave 40)
- Designing and launching the Armadilla website and social media platforms.
- Designing commercial brochures
- Drafting and issuing customized, site specific and bespoke presentations for clients

The University of Edinburgh

Dec 2014 - Feb 2019

Co-tutor, project supervisor and digital tutor

- Supervising and tutoring multiple interdisciplinary and architectural design courses across undergraduate and master's levels at Edinburgh College of Art (ECA).
- Evaluating student work and providing constructive feedback to support their academic growth and achievement.

Skills

- Proficient in AutoCAD, Revit, SketchUp, Adobe Creative Suite (Photoshop, Illustrator, InDesign)
- Strong understanding of design principles, and urban planning concepts
- Excellent communication, presentation, and interpersonal skills
- Detail-oriented with a commitment to delivering high-quality work
- Ability to work effectively in team environments and independently

Awards & Grants

- 2020 Queens Award for Enterprise, Armadilla Ltd.
- 2018 Devolved Researcher Fund for 18/19, The University of Edinburgh
- 2018 Devolved Researcher Fund for 17/18, The University of Edinburgh
- 2017 IAD (Institute for Academic Development) Action Fund (regular grants), The University of Edinburgh
- 2017 Festival of Creative Learning Fund from IAD (Institute for Academic Development), The University of Edinburgh
- 2017 Postgraduate Research Expenses Grant from Edinburgh College of Art, The University of Edinburgh
- 2016 Postgraduate Research Expenses Grant from Edinburgh College of Art, The University of Edinburgh
- 2014 awarded first class MSc student, school of architecture and landscape architecture in Iran university of science and technology
- 2010 Mention of honour for cooperation in holding the first general assembly of science association of architecture and urban planning of Iran at Iran University of Science and Technology

Roxana Karam

Landscape portfolio



Content

Projects

The Ard

Bangour Hospital

Pinetrees Hotel

Dalhousie Castle Hotel

Quirky Glamping Nights Village

Trenythorpe Manor



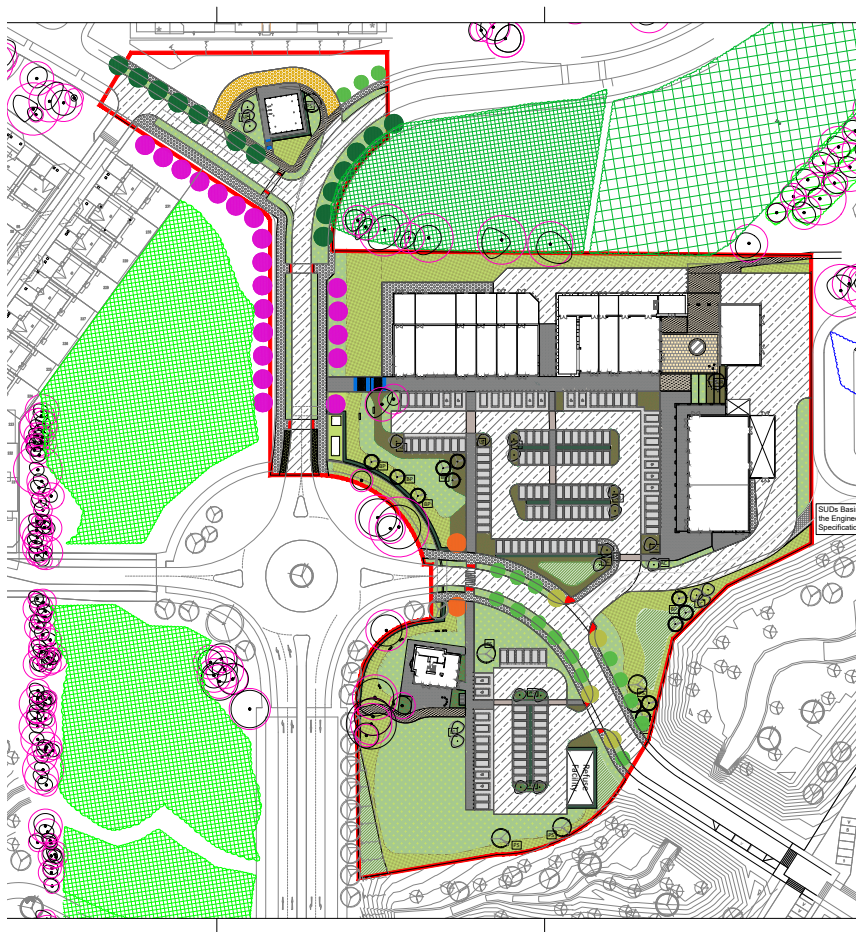
The Ard

Ongoing project
HarrisonStevens

HarrisonStevens collaborated with Hawkins Brown Architects to design landscapes for the Ard residential development. Our ongoing work includes innovative features like roof terraces, aiming to elevate the living experience by showcasing panoramic views of Glasgow city through high quality landscape platforms. The design strategically activates the space, incorporating schematic external amenities to enrich the overall cityscape. The project went for planning in Nov 2023. My main tasks included assisting with preparation of planning set and all the supporting documents submitted for stage 3.00.



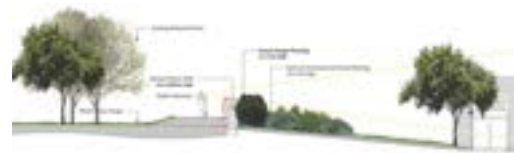




Bangour Hospital (commercial Hub)

Ongoing project
HarrisonStevens

Working within the design team, I contribute to the masterplan and detailed design for this former hospital site, including detailed proposals for parks, plazas, and the production of a Landscape and Habitat Management Plan. My current work includes detailed planning applications, Public Art implementation, and stakeholder consultation. The project was submitted for planning in May 2024. My primary responsibilities included assisting with the preparation of the Stage 2.00 concept design and landscape appraisal for the plaza located in the commercial hub at the site's centre. Additionally, I have contributed to the development of the Stage 3.00 planning set.





Phase Evolution and Form

01 The Phase outline



02 Framing the space



03 Access profile
highlighting the
primary access
points



04 Internal access
highlighting the
primary access
points



05 Considering
context and
introducing the
primary access
points



06 Furniture
and other site
elements
On the opposite
corner to the
primary access
points, a small
square of public
space is created
for the building
and adjacent area
to the building
and adjacent area
to the building





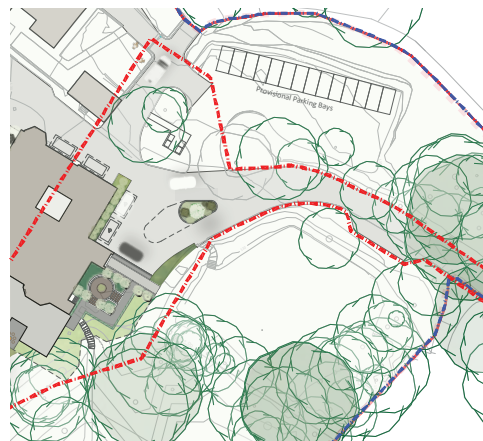
Pinetrees Hotel

Ongoing project
HarrisonStevens

The Pine Trees Hotel, founded in 1935, is set within a Scottish country estate dating back to 1892, encompassing 10 acres of picturesque gardens and woodlands. HarrisonStevens is working alongside ISA and Apex Hotels to develop a landscape appraisal aimed at enhancing the guests experience.

The project has been submitted for a planning application for Phase 1 of the landscape design, including a site appraisal for the main house. I was primarily involved in assisting with the preparation of the Stage 2.00 concept design and the development of the Stage 3.00 planning set. Currently, I am working on technical drawings for the tender submission. Additionally, I actively have been coordinating with the design team during project meetings.







Dalhousie Castle

Armadilla Ltd.

Robert Parker Collection Hotels Ltd has identified a market for high-end luxury pods to complement the hotel's use and provide additional accommodation capacity at this sought-after location. The proposal is to erect 12 tourist pods on the perimeter of the field, set within an extensive landscape around the edge of the existing field. The design respects the woodland root protection zone and has been carefully planned to minimize the impact on the setting of the listed castle while enhancing the adjacent woodland. Planting will extend between the units to screen them.

The project was submitted for a planning application in June 2022. My main tasks included assisting with the preparation of the Stage 2.00 concept design, site layout, access paths, and landscaping around the units, as well as coordination with the design team.



Quirky Glamping Nights Village

Armadilla Ltd.

Located in Enniscrone, this site features various transportation-themed accommodations, including a decommissioned Russian Boeing 767, which has been a tourist attraction since 2016. The site appraisal for this project includes 60 luxury pod accommodation units, new access roads, and both soft and hard landscape materials and elements.

The project was submitted for a planning application in December 2022. My primary tasks involved assisting with the site layout, concept design, and coordination with the design team.



Trenython Manor

Armadilla Ltd.

Country estates are part of England's rich heritage, and Wyndham Trenython Manor, one of nine branded IDILIQ Hotels & Resorts, is an architectural treasure built in 1872 within a private 24-acre estate. This proposal includes layouts for 24 luxury accommodation pods on a sloped landscape, creating multiple terraces with panoramic sea views.

The project was submitted for a planning application in November 2019. My key tasks included contributing to the design of the pod layouts, developing the Stage 2.00 concept, and selecting landscape materials.

